

YOUR GUIDE

RELAX.
RECHARGE.
REPEAT.

TO



**PATH
VACATIONS**

603-242-2861



[PATHVACATIONS.COM](https://www.pathvacations.com)

WELCOME TO PATH VACATIONS!

We are excited to introduce Summit Resort members to our vacation club!

As a member of Path Vacations, not only will you experience incredible vacations, you now also have access to the best perks any vacation club has to offer! Receive one-of-a-kind support from our dedicated Member Advocate team, earn cash rewards as a Path Vacations Ambassador, and join an exclusive online community that shares your passion for vacation and travel.

Transferring Summit members will now also have access to all three of our properties: **Steele Hill Resort, the Summit Resort and the Center Harbor Inn.** We know that you and your family will spend many wonderful years vacationing with us.

This guide is designed to assist you as you navigate the benefits of your new membership status. Learn more about our resorts, point values for booking, using our online member portal, and more.

Additionally, our Member Advocate team is available if you have any questions or need assistance with your membership.

We are delighted to have you as a member!

 WHAT'S INSIDE

The Next Steps - Let's Take a Vacation!	2
Steele Hill Resorts	3 - 10
Center Harbor Inn	11 - 12
Summit Resort	13 - 14
Making A Reservation	15
The Member Advocate Team	16
Reservation Windows	17
Understanding How Your Points Rollover	18
Simplified Online Booking	19 - 20
Understanding VacationMember.com	21
Your Documents	22

▲ LET'S TAKE A VACATION!



Your Summit Resort membership has transferred to a membership with Path Vacations



The Member Advocate team will reach out 2-3 weeks after the completion of your transfer date for an initial membership phone call



You will receive access to your **vacationmember.com** account via email



If applicable, you will receive access to your live RCI account via email 5-10 days after enrollment





STEELE HILL RESORT

SANBORNTON, NH

SET AMONG 500 ACRES OF PRISTINE
MOUNTAINTOP MEADOWS AND FORESTS

LOCATION

500 acres of serene New England forest and meadows, guests and members enjoy magnificent panoramic views of Lake Winnepesaukee and Lake Winnisquam outlined by the Belknap, Sandwich, Ossipee, and White Mountain ranges.

AMENITIES

10 room types • 4 pools • hot tubs • saunas
9-hole executive golf course • basketball court
tennis court • racquetball court • laser tag • and more!

DINING

4 dining venues including a full-service
tavern with local craft beers on tap



Steele Hill East features connected access to indoor/outdoor pools and the restaurant facilities.

1 BEDROOM

INCLUDES:

- Master bedroom with king sized bed
- Living room with queen sleep sofa
- Full kitchen
- Flat screen cable TV
- Balcony or patio with breathtaking views of lakes & mountains
- Occupancy: Capacity 4, Privacy 2



CATEGORY	WEEK	MIDWEEK	WEEKEND
1	52,000	6,240	10,400
2	41,500	4,980	8,300
3	31,000	3,720	6,200
4	21,000	2,520	4,200

2 BEDROOM

INCLUDES:

- Master bedroom with king sized bed
- Whirlpool bath
- Guest bedroom with twin beds
- Living room with sleep sofa
- 3 full bathrooms
- Full kitchen
- Flat screen cable TV
- 2 Balconies or patios with breathtaking views of lakes & mountains
- Occupancy: Capacity 6, Privacy 4



CATEGORY	WEEK	MIDWEEK	WEEKEND
1	75,500	9,060	15,100
2	60,500	7,260	12,100
3	45,500	5,460	9,100
4	30,500	3,660	6,100

Steele Hill West features indoor connection to our glass enclosed amenities center and game room.

1 BEDROOM

INCLUDES:

- Bedroom with 2 double beds
- Living room with queen sleep sofa
- Fireplace
- Bathroom with shower
- Full open concept kitchen with granite counter-tops
- 2 flat screen cable TVs
- Balcony with spectacular views of lakes & mountains or nearby forest
- Occupancy: Capacity 4, Privacy 2

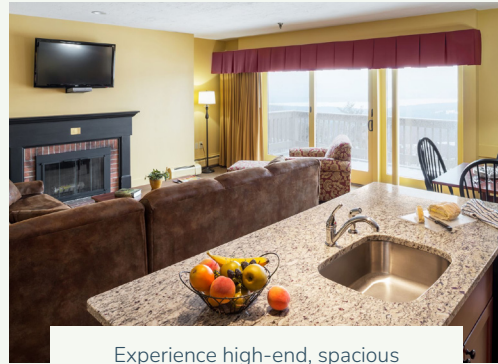


CATEGORY	WEEK	MIDWEEK	WEEKEND
1	52,000	6,240	10,400
2	41,500	4,980	8,300
3	31,000	3,720	6,200
4	21,000	2,520	4,200

2 BEDROOM

INCLUDES:

- Master bedroom with king sized bed
- Whirlpool bath
- Guest bedroom with double beds
- Living room with queen sleep sofa
- Fireplace
- 2 full bathrooms
- Full kitchen
- 3 flat screen cable TVs
- Balcony with spectacular views of lakes & mountains
- Occupancy: Capacity 6, Privacy 4



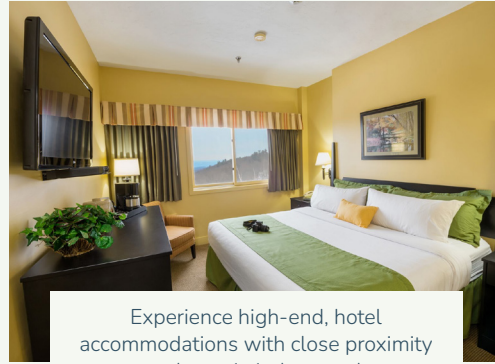
Experience high-end, spacious accommodations in our signature townhouse units.

CATEGORY	WEEK	MIDWEEK	WEEKEND
1	80,500	9,660	16,100
2	64,000	7,680	12,800
3	48,000	5,760	9,600
4	32,500	3,900	6,500

SIGNATURE HOTEL

INCLUDES:

- Master bedroom with king sized bed
- Full bathroom with whirlpool bath
- Large side by side vanity
- Flat screen cable TV
- Mini fridge, coffee maker & microwave
- Window views of lakes & mountains or nearby forest
- Occupancy: Capacity 2, Privacy 2



Experience high-end, hotel accommodations with close proximity to the main indoor pool.

CATEGORY	WEEK	MIDWEEK	WEEKEND
1	28,500	3,420	5,700
2	22,500	2,700	4,500
3	17,000	2,040	3,400
4	11,500	1,380	2,300



Steele Hill South is the resort's most recent addition.

1 BEDROOM

INCLUDES:

- Master bedroom with king sized bed
- 2-person jacuzzi tub
- Master bathroom with shower
- Living room with queen sleep sofa
- Queen sized Murphy bed
- Full kitchen with granite counter-tops
- Gas fireplace
- Second full bathroom
- Plasma TV
- Washer and Dryer
- Balcony or patio
- Occupancy: Capacity 6, Privacy 4



CATEGORY	WEEK	MIDWEEK	WEEKEND
1	73,500	8,820	14,700
2	59,000	7,080	11,800
3	44,000	5,280	8,800
4	29,500	3,540	5,900

STUDIO

INCLUDES:

- Queen sleep sofa
- Queen sized Murphy bed
- Bathroom with shower
- Gas fireplace
- Plasma TV
- Washer and Dryer
- Full kitchen with granite counter-tops
- Balcony or patio
- Occupancy: Capacity 4, Privacy 2



CATEGORY	WEEK	MIDWEEK	WEEKEND
1	43,500	5,220	8,700
2	35,000	4,200	7,000
3	26,000	3,120	5,200
4	17,500	2,100	3,500

MASTER HOTEL

INCLUDES:

- King sized bed
- Master bathroom with shower
- Large TV
- 2-person jacuzzi tub in either bedroom or bath
- Occupancy: Capacity 2, Privacy 2



Enjoy access to all resort amenities while staying in these luxurious hotel style accommodations.

CATEGORY	WEEK	MIDWEEK	WEEKEND
1	30,000	3,600	6,000
2	24,000	2,880	4,800
3	18,000	2,160	3,600
4	12,000	1,440	2,400



Steele Hill South is the resort's most recent addition and offers unparalleled views of the area's lakes and mountains.

1 BEDROOM VISTA SUITE

INCLUDES:

- Master bedroom with king sized bed
- Full bathroom with shower
- Living room with queen sleep sofa
- Full kitchen with granite counter-tops
- Gas fireplace
- Washer and Dryer
- Balcony or patio that stretches from the bedroom to the living space
- Occupancy: Capacity 4, Privacy 2



CATEGORY	WEEK	MIDWEEK	WEEKEND
1	55,000	6,600	11,000
2	44,000	5,280	8,800
3	33,000	3,960	6,600
4	22,000	2,640	4,400



2 BEDROOM VISTA SUITE

INCLUDES:

- Master bedroom with king sized bed
- Master bathroom with 2-person jacuzzi tub and separate shower
- Second bedroom with king sized bed and full bathroom
- Living room with queen sleep sofa
- Full kitchen with granite counter-tops
- Gas fireplace
- Washer and dryer
- Balcony or patio that stretches from the bedroom to the living space
- Occupancy: Capacity 6, Privacy 4



CATEGORY	WEEK	MIDWEEK	WEEKEND
1	85,000	10,200	17,000
2	68,000	8,160	13,600
3	51,000	6,120	10,200
4	34,000	4,080	6,800





CENTER HARBOR INN

CENTER HARBOR, NH

SITUATED ON THE NORTHWEST
SHORES OF LAKE WINNIPESAUKEE

LOCATION

Centrally located in town, the Center Harbor Inn is the best lakeside resort in the region, with a multitude of activities, shopping and dining options just steps away. Leave the hustle and bustle of the city behind in exchange for a relaxing getaway on the shores of Lake Winnepesaukee.

AMENITIES

"Roll out of bed" beach and lake access
dock slips • kayaks • sauna • and more!

ACCOMMODATIONS

Boutique hotel with the perfect blend
of rustic charm and modern design



THE LODGE KING UNIT

Enjoy the Center Harbor Inn's lakeside setting with private beach access.

1 BEDROOM

Relax in your welcoming king sized bed with its signature floor to ceiling hickory headboard — Spend an evening enjoying the views and fresh lake air from your deck — Pamper yourself in the modern, fully tiled bathroom with glass paneled showers and custom vanities.

ROOM AMENITIES INCLUDE:

- King sized bed
- Full bathroom with shower
- Large format, flat screen TV
- Mini fridge
- Microwave
- Coffee maker
- Private balcony with breathtaking views of lakes & mountains
- Occupancy: Capacity 2, Privacy 2



The perfect blend of modern design and rustic tones for your next Lake Winnepesaukee getaway.

CATEGORY	WEEK	MIDWEEK	WEEKEND
1	64,000	7,680	12,800
2	51,000	6,120	10,200
3	38,500	4,620	7,700
4	28,500	3,420	5,700





THE SUMMIT RESORT

LACONIA, NH

OVERLOOKING LAKE WINNIPESAUKEE,
JUST MINUTES FROM WEIRS BEACH

LOCATION

The Summit Resort is just a short distance from the majestic Lake Winnepesaukee, and right in the heart of the exciting Weirs Beach area. Ideal for families, our spacious suites provide room for six guests with the convenience of a full kitchen and dining area. Lake Winnepesaukee and four nearby mountain ranges are the perfect setting for outdoor activities, scenic drives, shopping, and dining.

AMENITIES

Indoor and outdoor pools • Roman spa saunas • fitness center • and more!

ACCOMMODATIONS

All-suite resort with balconies or patios overlooking Lake Winnepesaukee area



Offering the highest standard of resort accommodations in the Lakes Region.

2 BEDROOM

These spacious units sleep up to 6 people with a king sized bed in the master bedroom, a guest bedroom furnished with 2 twin sized beds and a queen sized pullout sofa in the living room.



ROOM AMENITIES INCLUDE:

- Full kitchen
- Washer and dryer
- Electric fireplace in living room
- Jacuzzi tub in master bathroom with a shower
- Second bathroom
- 2 flat-screen TVs
- Relaxing balcony
- Occupancy: Capacity 6, Privacy 4

CATEGORY	WEEK	MIDWEEK	WEEKEND
1	70,500	8,460	14,100
2	56,500	6,780	11,300
3	42,500	5,100	8,500
4	28,000	3,360	5,600



MAKING A RESERVATION AT YOUR HOME RESORT

Reservations can be made right from your
vacationmember.com account.

- OR -

contact the **Path Vacations reservations team**
at **1-800-781-3952** for assistance with your booking.



Our club structure is designed with simplicity and flexibility in mind, with options for members to book vacations that work with their personal travel style. We understand however, that sometimes our members have questions, concerns, or just need a little guidance in the realm of vacation ownership bookings and exchanges. **That is where our Path Vacations Advocates come in.**

As part of your membership in Path Vacations, **you have a dedicated Member Advocate team who are there for you whenever you need help.** Our members receive personalized service that the other 'bigger' corporations can't offer. Your Advocates do more than just help make reservations, they can coordinate and expedite anything you need within the resort or booking process, and **they are contract specialists with the knowledge to help you get the most out of your membership!**

Your Advocates do more than just answer questions. They can coordinate and expedite anything you need within the resort or reservation process, and they are contract specialists with the knowledge to help you get the most out of your membership.



You can reach your
Member Advocate Team
at **603-242-2861**

-OR-

SCAN the QR CODE to submit an inquiry to the team

myadvoc.com



RESERVATION WINDOWS

AT YOUR HOME RESORT

At Path Resorts we believe in providing our guests with the flexibility and convenience they need to make the most of their vacation. That's why we offer reservation windows that allow you to plan your trip with ease. With our simple online reservation system, you can easily book your stay up to a year in advance, giving you plenty of time to plan your perfect getaway.



UNDERSTANDING HOW YOUR POINTS ROLLOVER

At your home resort, we understand that life can be unpredictable and plans can change at a moment's notice. That's why we offer the option to roll over your unused vacation points to the next year, giving you the flexibility you need to plan your dream vacation on your own schedule. With our easy-to-use online platform, you can easily manage your points and track your vacation time, ensuring you never miss out on the opportunity to use them. Whether you're looking to save up for a longer vacation or simply can't travel as much in a given year, rolling over your points allows you to maximize the value of your membership and get the most out of your vacation ownership. So don't let unused points go to waste - roll them over and start planning your next adventure today.



NEED EXTRA POINTS?

Take advantage of our RENTAL POINTS PROGRAM!

Contact the Path Vacations Reservations Team at **1-800-781-3952** to rent points for your vacation at a small per point fee. As a Path Vacations Member, you can rent up to half of your annual allotment of points.

Don't forget: If you find yourself renting often, you can upgrade your annual point allotment for a small per point fee!

Have questions or want more info?

Contact the Path Vacations Member Advocates at **603-242-2861**



ENJOY THE EASE OF VACATIONMEMBER.COM

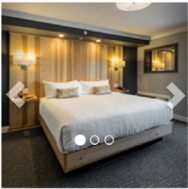
Vacation planning can be overwhelming and time-consuming, but with vacationmember.com's simplified online booking system, planning your next getaway has never been easier. Our user-friendly platform allows you to search and compare a variety of accommodations, from luxurious resorts to cozy vacation rentals, all in one place. Simply enter your desired destination, travel dates, and our algorithm will provide you with a personalized list of options tailored to your specific needs. With real-time availability and instant confirmation, booking your dream vacation has never been more seamless.

To see different availability, please change your search criteria. Arrival dates meeting your criteria will be returned. Your current travel dates are 5/2/2023 through 5/9/2023.

Resort	Desired Arrival	Number of Nights	Guests	Availability
All Resorts	5/2/2023	7	2	Availability

Center Harbor Inn Reservation

Resort Information



CHI Htl King

Arrival: 5/2/2023 | Departure: 5/9/2023

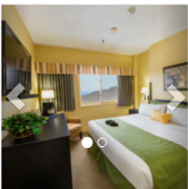
Enjoy the lakeside setting on your private balcony. The Hotel King Rooms offer the perfect blend of modern design and rustic tones for your next Winnepesaukee getaway. Relax in your welcoming king size bed with its signature floor to ceiling hickory headboard or spend an evening enjoying the views and fresh lake air from your deck. Room amenities include a large format, flat-screen TV, a mini-fridge, a microwave, a coffee maker and a modern fully tiled bathroom with glass paneled showers and custom hickory vanities.

Points needed: 38500

Release Points

Steele Hill Reservation

Resort Information



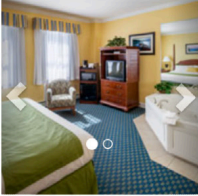
West Hotel

Arrival: 5/2/2023 | Departure: 5/9/2023

Steele Hill West, with indoor access to our glass amenities center, offers these hotel style units. The west hotel unit includes a master bedroom with king sized bed, full bathroom with whirlpool bath, cable TV with DVD player, mini-fridge, coffee maker, microwave and window views of lakes, mountains and nearby forests.

Points needed: 11500

Book now



South Hotel

Arrival: **4/30/2023** | Departure: **5/7/2023**

The master south hotel room includes a king sized bed, master bathroom with shower, a large TV and a two person Jacuzzi tub. Enjoy access to all resort amenities while staying in these luxurious hotel style accommodations.

Points needed: 12000

[Book now](#)



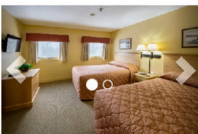
South Studio

Arrival: **4/30/2023** | Departure: **5/7/2023**

Studio units with unparalleled views of the Belknap Mountain Range and Lake Winnisquam. The south studio includes queen sized pullout sofa and queen size Murphy bed, bathroom with shower, gas fireplace, plasma TV, in-room washer and dryer, full kitchen with granite countertops and balcony or patio.

Points needed: 17500

[Book now](#)



West 1bd

Arrival: **4/30/2023** | Departure: **5/7/2023**

Steele Hill West, with indoor access to our glass amenities center, offers these large 1 bedroom units. The 1 bedroom west unit includes bedroom with two 2 double beds, living room with queen sized sleep sofa, fireplace, bathroom with shower, full kitchen, flat screen cable TV and balcony with spectacular views of lakes, mountains and nearby forests.

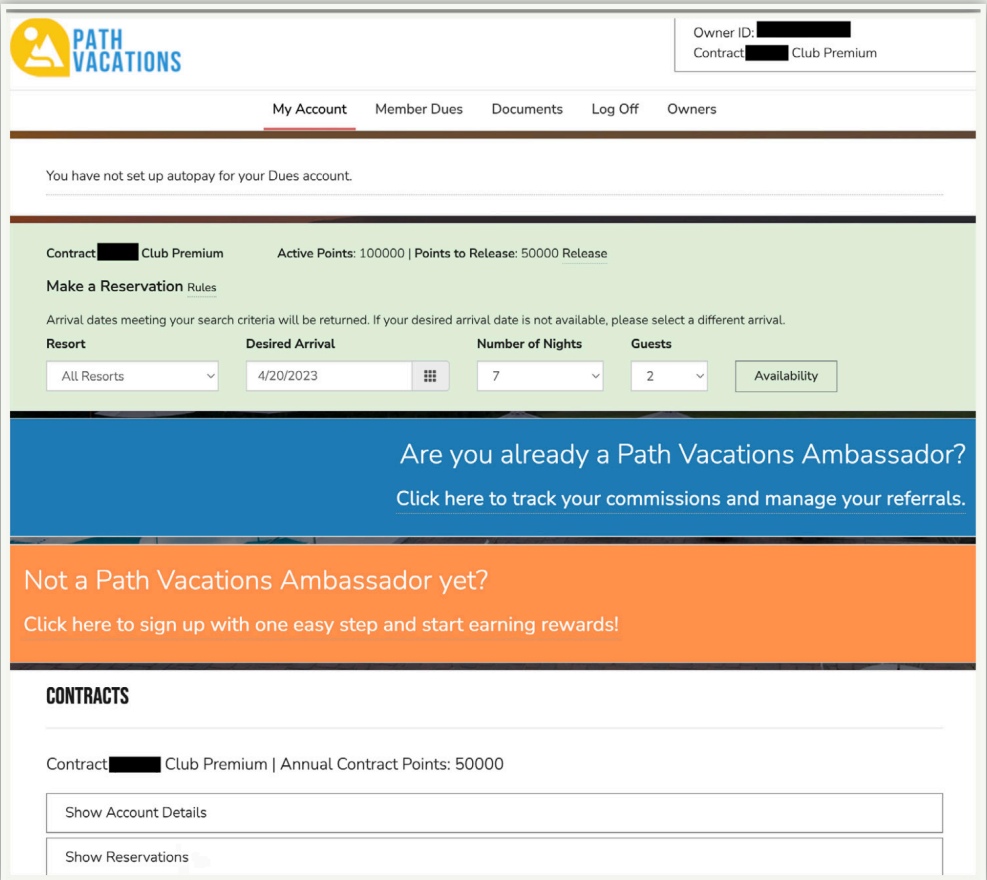
Points needed: 21000

[Book now](#)

VACATIONMEMBER.COM

gives Path Vacations Members access to:

- Manage your account
- Update payment information and make online payments
- View reservation information
- Review important Member documents
- Book and manage reservations at your home resort(s)
- Transfer points to your RCI account (if applicable)



The screenshot shows the Path Vacations member account dashboard. At the top left is the Path Vacations logo. On the right, it displays the Owner ID and Contract information (Contract: [redacted] Club Premium). Below the logo is a navigation menu with options: My Account (highlighted), Member Dues, Documents, Log Off, and Owners. A message states: "You have not set up autopay for your Dues account." The main content area shows contract details: "Contract [redacted] Club Premium" and "Active Points: 100000 | Points to Release: 50000 Release". There is a "Make a Reservation" section with a "Rules" link. Below this, a message says: "Arrival dates meeting your search criteria will be returned. If your desired arrival date is not available, please select a different arrival." A reservation form includes fields for "Resort" (All Resorts), "Desired Arrival" (4/20/2023), "Number of Nights" (7), and "Guests" (2). An "Availability" button is also present. Two promotional banners are shown: a blue one for Path Vacations Ambassadors and an orange one for signing up as an ambassador. At the bottom, there is a "CONTRACTS" section showing "Contract [redacted] Club Premium | Annual Contract Points: 50000" and two buttons: "Show Account Details" and "Show Reservations".

CONVENIENT ACCESS



TO ALL OF YOUR PATH VACATIONS DOCUMENTS

DOCUMENTS

Club Member Docs > Club Calendar

Name	Last Updated	Size
2024 Club Calendar  PDF	3/24/2023	169 KB
Campground Calendar 2023  PDF	1/19/2023	28 KB
2023 Club Calendar  PDF	8/23/2022	169 KB

Club Member Docs > Club Trust

Name	Last Updated	Size
Path Vacations Transfer Document  PDF	1/13/2023	110 KB
Path Vacations Club Public Offering Statement  PDF	9/20/2022	3 MB
Path Vacations Club Rules and Beneficial Membership Agreement  PDF	9/20/2022	846 KB

Club_Steele Hill Yearly Newsletters

Name	Last Updated	Size
Path Vacations 2022 Newsletter  PDF	9/29/2022	2 MB
Steele Hill Resorts 2021 Fall Newsletter  PDF	10/7/2021	3 MB
Steele Hill Resorts 2020 Fall Newsletter  PDF	5/7/2021	2 MB
Steele Hill Resorts 2019 Fall Newsletter  PDF	7/3/2020	2 MB
Steele Hill Resorts 2016 Fall Newsletter  PDF	9/26/2018	10 MB
Steele Hill Resorts 2015 Fall Newsletter  PDF	9/26/2018	2 MB
Steele Hill Resorts 2014 Fall Newsletter  PDF	9/26/2018	3 MB
Steele Hill Resorts 2013 Fall Newsletter  PDF	9/26/2018	1 MB
Steele Hill Resorts 2012 Fall Newsletter  PDF	9/26/2018	3 MB
Steele Hill Resorts 2011 Fall Newsletter  PDF	9/26/2018	2 MB



RELAX.



RECHARGE.



REPEAT.



**PATH
VACATIONS**

603-242-2861



PATHVACATIONS.COM